

Version 1.07

(18.03.2020)

# Installation Instruction

## Add-on Set Sound Booster

Article no. 40639

40641

41281



---

## Contents

Disclaimer.....	2
Copyright.....	3
General advice.....	3
Safety instructions.....	4
References of legal regulations for operation.....	4
Note.....	5
Scope of delivery for 40639.....	5
Scope of delivery for 40641.....	5
Scope of delivery for 41281.....	5
Installation instructions.....	6
Notes for the installation of the Sound Actuator Mini.....	8

---

## Disclaimer

Dear Buyer,

our cable harnesses are developed with the help of the circuit diagrams and wiring schemes of the particular vehicle producer and they are tested and adjusted to the original vehicle before the serial production. Therefore, the integration into the on-board electric and electronic system follows the information of the vehicle producers. Our installation instructions are consistent, in course of the necessary pre-understanding and the precision of the presentation in text and picture, with the staff usual in vehicle electrics / electronic and they have proven their value already hundredfold in practice.

If during the installation of our products there occur difficulties, so we are any time ready to provide you support by phone or E-Mail. Additionally, we offer you to use the installation in our workshop in Bad Segeberg.

The costs arising from the third parties assigned with the installation of our products, bears the Buyer. Only when it proves that there is a failure of our product we will compensate the evidenced costs of the assembly and the costs of the dismantling of the defective product, whereby we limit the cost reimbursement up to 110 EURO gross and we reserve our right to check the claimed defect in our workshop in Bad Segeberg. The costs of dispatch will be refunded in case of a justified claim.

We made the experience that each professional workshop which is equipped with a necessary diagnosis devices, diagnosis software and the circuit diagrams of the producer, can find the possible defects in our products within a short period of time, so the assembly and disassembly including failure diagnosis, can take place in maximum 60 minutes.

We also made the experience that many workshops are not able to cope with the producer's circuit diagrams and cannot read the common wiring schemes, so for simplest installation labors several hours are calculated. You will understand that we neither take the risk to find a reliable workshop nor we finance the training for the workers of the workshop of your confidence.

The costs that arise from the acquisition of the missing parts or replace for defective parts from another supplier, we reimburse to the amount of the costs which would have arisen in case of subsequent delivery (saved expenditure). In this case according to the legal warranty law there would be no reimbursement right of any kind, as long as no deadline was set for the supplementary performance or a deadline for supplementary performance has not expired.

So, if you have any problems during the installation or operation of our products call us write us an E-Mail, send us the product or come to our workshop in Bad Segeberg with your vehicle. We are sure to find a solution for concern of every kind.

Kind regards

**Your Kufatec GmbH & Co. KG Team**

## Copyright

Our assembly and operation manuals, assembling diagrams and additional documentation in text or picture form are protected by law.

Disclosure and distribution of this documentation through print or online media is permitted only after previous written acceptance from Kufatec GmbH & Co. KG.

## General advice

While developing this product, your personal safety combined with the best operating service, modern design and an up-to-date production technique was especially taken into account.

Unfortunately, despite the utmost care injuries and/or damages might occur due to improper installation and/or use.

Therefore, please read with great care and completely this operating manual and store it appropriately!

For your safety, all our products pass through a 100 % control check.

We reserve the right to carry out technical changes which serve the improvement at any time.

According to each article and purpose, it is sometimes necessary to check each country's legal regulations before installing and starting the unit.

In case of guarantee claims, the device has to be sent back to the seller in the original packaging with the attached bill of purchase and detailed defects description. Please pay attention to the manufacturers return requirements (RMA). The legal warranty directions are valid.

The warranty claims as well as the operating permissions become invalid due to:

- a) unauthorized changes to the device or accessories which have not been approved or carried out by the manufacturer or its partners
- b) opening the devices frame
- c) self-made repairs on the device
- d) improper use / operation
- e) brute force to the device (drop, willful damage, accident etc.)

During installation, please pay attention to all safety relevant and legal directions.

The device has only to be installed by trained personnel or similarly qualified people.

**Please limit the failure search to ca. 0,5 hour for the mechanical resp. 1.0 hour for electric labors during the assembly or functioning problems.**

To avoid unnecessary additional expenses please send immediately an inquiry to our technical support using the Kufatec form (<http://www.kufatec.de/shop/de/infocenter/>).

Please provide always the following information:

- *chassis number*
- *part number of the add-on kit*
- *exact description of the problem*
- *already executed labor*

## Safety instructions

The installation can be executed only by trained qualified personnel. Before the installation disconnect the power supply. Therefore, cut off the battery from the vehicle electric system, follow the manufacturer's specification.

- *Never use bolts, screws and other fastening elements from car's safety devices or steering wheel, brakes because it may influence your driving safety and cause accidents.*
- *Connect the device only to a 12V vehicle voltage with chassis ground to the car body. This unit cannot be used in large trucks or other vehicles which use a DC 24 V battery wiring system voltage.*
- *Avoid to install the device in places where it could hinder the safe driving or functional efficiency of the other units installed in the vehicle.*
- *This unit is only for the use with the following vehicles and model line; only connections described within this instruction manual are allowed or required to use for installation.*
- *For damage impact caused by faulty installation, unsuitable connections or assembling in inappropriate vehicle types or models Kufatec GmbH & Co.KG assumes no liability.*
- *We advise you that these units process data out of the MOST protocol from the vehicle. During the assembly of this unit we as supplier have access to a specific model and we as producer don't know the overall system you work with.*
- *Especially in case of changes within the same model line and the same model year we don't guarantee the usability of our products. In case of the usability of our products with the manufacturer's changes Kufatec GmbH assumes no liability.*
- *Kufatec GmbH assumes no liability that the assembly of the unit described in this manual is approved according the warranty regulations of the single car manufacturers. Please check your manufacturer's conditions and warranty before you begin the installation.*
- *Kufatec GmbH reserves the right to change the device specification without further notice.*
- *Errors and changes excepted.*

## References of legal regulations for operation

Use this unit in the intended domain only.

If you use the unit in a foreign domain, if the unit is not installed properly, or if the unit will be reconstructed the operating permit and warranty will expire.

## Note

**The use of a sound booster is not permitted without registration in the vehicle papers, in the area of the german StVZO. The noise emission of the vehicle is increased by this retrofit. The regulations of the StVZO must be observed. It is therefore recommended to ask for a specific registration option at the responsible TÜV/DEKRA office before retrofitting. Outside Germany, please observe the laws on vehicle licensing applicable in your country.**

### Scope of delivery for 40639

- External sound generator universal
- Cable set

### Scope of delivery for 40641

- External sound generator universal
- Cable set

### Scope of delivery for 41281

- Sound actuator mini
- Cable set

## Installation instructions

The connection of the delivered cable set will be carried out at the external sound generator resp. sound actuator mini (fig. 1) and at the control unit for the motor sound generation as well (fig. 2).

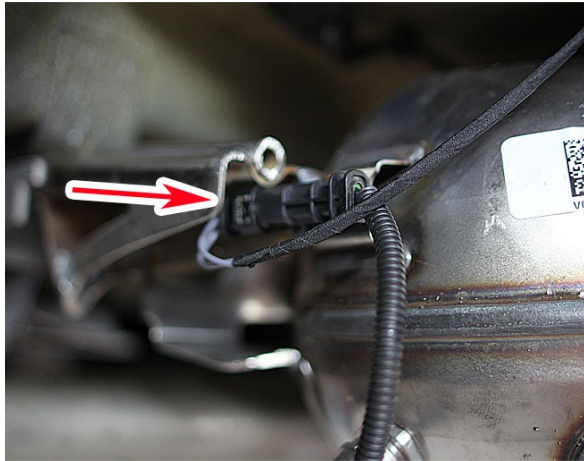


fig. 1



fig. 2

The plug contacts of the cable set have to be pinned in the free lots (fig. 3). For this, it is necessary to remove the plug from the control unit and to open the pink contact locking device (fig. 4).

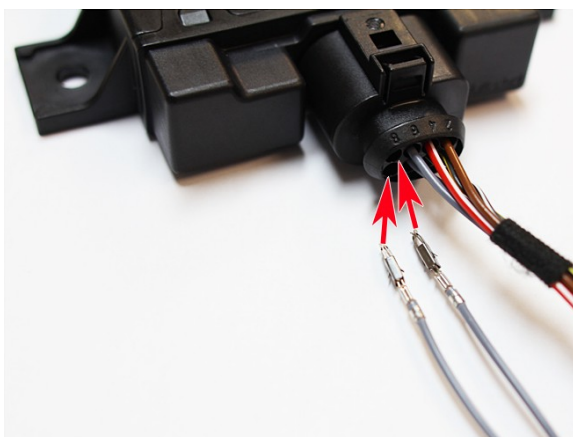


fig. 3

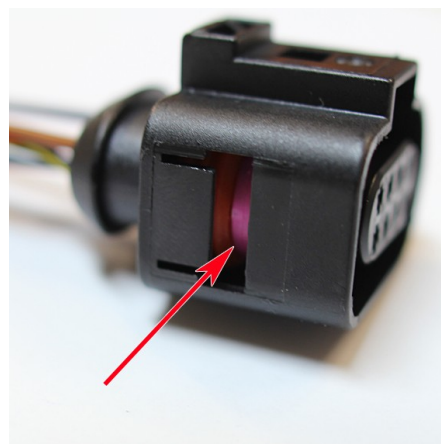


fig. 4

**Important Note:** Please be aware, that the connections of the two cables (Fig. 5, 6) are the same for the Extended Version as they are for the shown Pro Version.

The **Extended Version** only has one additional plug connection.

Please pin the contacts of the cable into the positions pin 5 and pin 6 (fig. 5 + 6) according to inscription and close the locking device afterwards.

**Note:**

Depending on the equipment of the vehicle, the two pins (Pin5 & 6) may already be assigned. Alternatively, the connection can be made as follows:

Cable with imprint pin 5 is pinned into pin 7

Cable with imprint pin 6 is pinned into pin 8



fig. 5

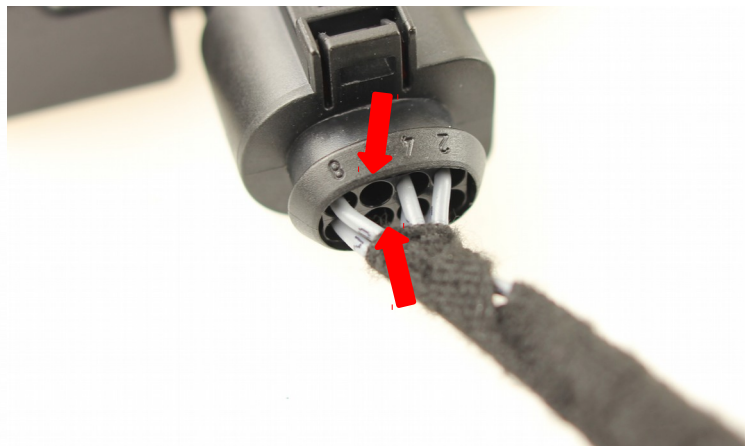


fig. 6

Please use for the fastening of the sound generator appropriate screws, which bear up a high strain. To avoid a discrete loosening of the screws by vibration, protect the screws with appropriate factory material. Additionally, please check the stability of the sound generator at regular intervals and retighten the screws as needed. In case of inobservance we assume no liability for potential damages.



## Notes for the installation of the Sound Actuator Mini

In the installation of the sound actuator mini a convenient place under the engine hood has to be looked for (see fig. 7 + 8 e.g.). In this connection, it is responsible to see that there is enough space available, also when the engine hood is closed.

The measurements of the sound actuator are 6 cm diameter und approx. 4 cm height.

For fixing the sound actuator mini the glue **Loctite EA 9492 Epoxy Adhesive** will be needed additionally (not included in scope of delivery).



fig. 7

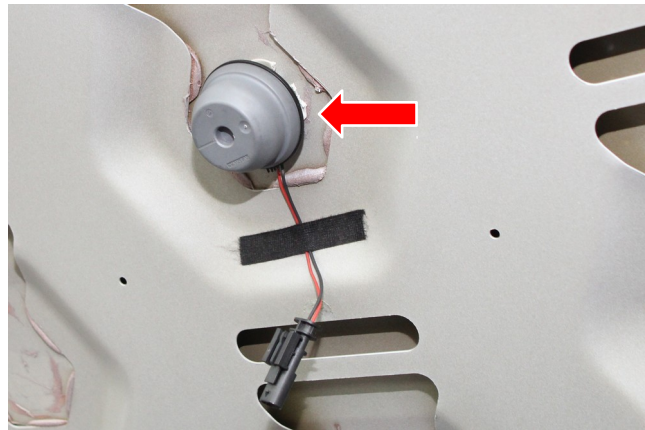


fig. 8

During applying the adhesive, you have to see forcefully, that the adhesive is applied on the white area only (fig. 9). The housing resp. the black and grey areas may not be stuck together. Should the housing or other parts of the mini actuator be glued together, the actuator cannot swing free and it would be damaged.

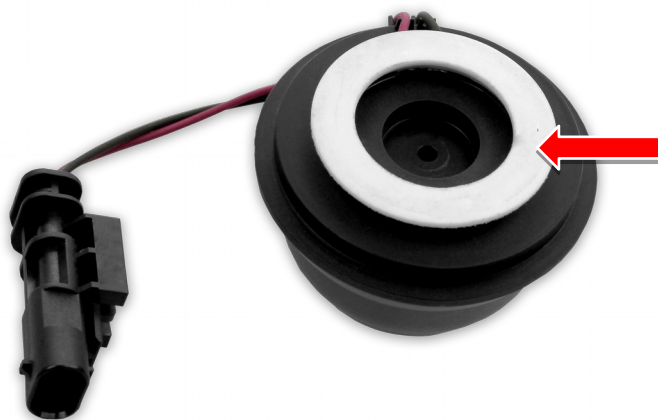


fig. 9