



## **Installation Instructions**

Complete set active Sound incl. Soundbooster

BMW 5er GT F07

v1.2 (16.06.2017)

## Contents

1	Liability Exclusion	3
2	Copy Right	4
3	General Notes	4
4	Safety instructions	5
5	Requirements for the determinable operation	5
6	Note	5
7	How to connect a cable to another	6
8	Note Cable Inscription/Color	7
9	Assembly Instructions	8
10	Removing front trim panel passenger's side	9
11	Connection CAN High & Low / ignition lead	10
12	Connection ground / positioning control units	11
13	Removing rear trim panel passenger's side	12
14	Removing trim panel trunk	13
15	Cable routing to the sound generator	14
16	Installation / Connection sound generator	15
17	Removing lower trim panel of the dashboard	16
18	Installation pushbutton	17
19	Important Information Sound Booster	18

# 1 Liability Exclusion

Dear Customer

Our cable sets are developed according to the connection- and circuit diagrams of the corresponding car manufacturer. Before the original production the cable sets will be tested on an original car. Therefore, the integration into the car electronics will be executed according to the instructions of the manufacturer. Regarding the necessary pre-understanding and the accuracy of the presentation of texts and pictures our mounting guidelines correspond to the usual ones in car technology and car electronics. Practically, they have been proved one's worth a hundred times.

However, should there be any difficulties during the installation of our products we will be at your disposal any time for support by phone or by mail. Moreover, we offer you to execute the installation at our works in Bad Segeberg.

Costs which may arise because a third person will execute the installation of our products will not be supported by us in any case. Only if there is a mistake caused by our product we will pay the proved costs of the installation as well as the costs of the removal of the defective product. The refund of expenses will be limited to gross EUR 110,- ; we reserve the right to check the described mistake in our works in Bad Segeberg. In case of a proved reclamation the costs for dispatch for the check in our factory will be transferred to you.

According to our experience each specific factory which has the necessary diagnostic device, diagnostic software and the circuit diagrams of the manufacturer can find possible mistakes at our products within a short time. So the installation and removal including diagnostic inspection can be realised in at most 60 minutes.

We also made the experience that many specific factories cannot work with the circuit diagrams of the manufacturer, and that they cannot read usual wiring diagrams. Therefore, very easy installation works will take many hours. You will understand that we neither take the risk to find a reliable specific factory nor the financing of the training of the staff of your favoured factory.

Costs which will arise because you buy missing parts or spare parts at other suppliers will be refunded by us up to the amount of the costs which had been arisen by additional supply (saved expenses). In this case, there would be no right for refund according to the legal guarantee right as long as we have no deadline for supplementary performance or a deadline for supplementary performance has not expired.

So if you have any problems with the installation or operation of one of our products please call us, send us an email, send us the product or take your car to our factory in Bad Segeberg. We are sure to find an appropriate solution for each concern.

With best regards

Your Kufatec GmbH & Co. KG Team

## 2 Copy Right

Our installation- and removal instructions, installation plans, software and other documentation with texts or pictures are protected by copy right.

A publication or distribution of these documents is only permitted with a written approval of Kufatec GmbH & Co. KG.

## 3 General Notes

Regarding the development there has especially been paid attention to your personal safety together with the most possible operating comfort, modern design and actual product technologies.

Despite most possible accuracy in case of incorrect installation or use or in case of incorrect operating, it is possible that injuries or damages of property may arise.

Therefore, please read the operating instructions you have received carefully and completely, and keep it with you.

All articles of our production will be checked at 100% — for your safety.

We reserve the right to make technical changes which serve the progress at any time.

Before the installation or startup it may be necessary, depending on the article and purpose of use, to check the legal instructions of each country.

In case of warranty claim the device has to be sent to the seller originally packed together with the sales receipt and a detailed description of the mistake. Please consider the manufacturer's instructions for return (RMA). The legal warranty instructions are valid.

The warranty claim and also the permission for startup will expire in case of:

- unauthorised changes on the device or the accessories which have not been executed or approved by the manufacturer or its partners
- opening of the box
- repair of the device on your own
- incorrect use / no normal use / startup
- influence of force on the device (falling down, wilful damage, accident, etc.)

During the installation please consider all safety and legal instructions. The device may only be installed by trained qualified personnel or persons who are similar qualified.

**In case of installation- or function problems please reduce the search of the mistake to approx. 0,5 hours for mechanical works or 1,0 hours for electronic works.**

To avoid unnecessary additional work and expenses, please send immediately an inquiry to our technical support with the Kufatec contact form (<http://www.kufatec.de/shop/de/infocenter/>)

Please absolutely mention the following:

- car chassis number
- part number of the add-on kit
- exact description of the problem
- work steps already made

## 4 Safety instructions

The installation may only be executed by trained qualified personnel. Please execute the installations only in a condition of dead voltage. Here please separate for example the battery from the main power supply and consider the instructions of the car manufacturer.

- In order to not endanger your own driving safety please never use security relevant screws, bolts or other fixation pieces at steering, brake system or other components.
- Connect the device only at 12V wiring system voltage with ground connection to the autobody. This assembly is not allowed for the use in trucks or other cars with 24V wiring system voltage.
- Please avoid the installation of the device at positions where the driving safety or the functional efficiency of other subassembly integrated in the car are restricted.
- This module may only be used together with the following mentioned car types and models; the installation may be executed exclusively by use of the circuit points mentioned in the assembly instructions.
- Kufatec GmbH & Co. KG does not assume liability for damages which are caused by incorrect installation, the use of inapplicable circuit points or the installation into car types and -modules which are not foreseen.
- We would like to draw your attention to the fact that the module processes the data of the MOST-protocol of the car mentioned below. Therefore, during the installation of the module it will be used a model-specific complete system which we as the manufacturer of the mentioned construction line only know partly.
- Especially in case of changes within the same model line and the same year we therefore cannot guarantee the applicability of our construction line in each case. Kufatec GmbH & Co. KG does not assume liability for the applicability of our construction line with changes made by the manufacturer.
- Kufatec GmbH & Co. KG does not assume liability that the installation of the here described component has been permitted according to the guarantee instructions of particular car manufacturers. Therefore, please consider the guidelines for installation and guarantee conditions of your car manufacturer before installation.
- The manufacturer reserves the right to change components without giving reasons.
- Subject to errors and changes

## 5 Requirements for the determinable operation

Please use the device only in its the corresponding area.

In case of unprofessional and untypical use, installation or modification the permission for operation and the warranty claim will expire.

## 6 Note

**Make sure that there's enough space at the described position. If there is no space please cancel the installation and contact our technical support.**

**The use of a sound booster is not permitted without registration in the vehicle papers, in the area of the german StVZO. The noise emission of the vehicle is increased by this retrofit. The regulations of the StVZO must be observed. It is therefore recommended to ask for a specific registration option at the responsible TÜV/DEKRA office before retrofitting. Outside Germany, please observe the laws on vehicle licensing applicable in your country.**

## 7 How to connect a cable to another

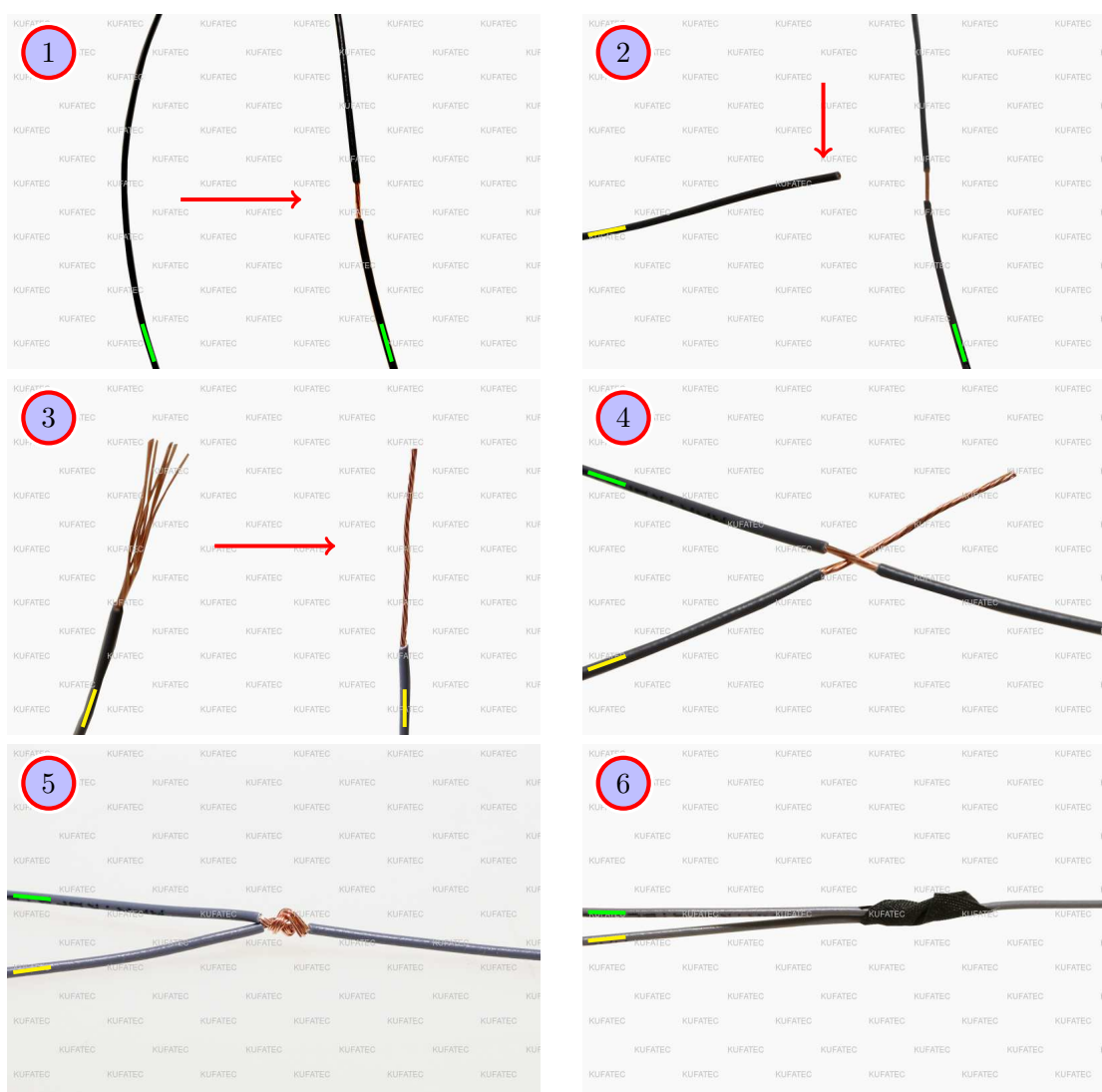


Figure 1: How to connect a cable to another

Table 1: How to connect a cable to another

No.	Work step	Note
1	Take the cable of the vehicle, to which you want to connect, (green marked here) and strip the insulation at one point with a suitable tool (cable stripper/cutter knife).	
2	Now take the cable of the cable set, which you want to connect, (yellow marked here) and strip the insulation at the end.	
3	Twirl the wires of the stripped cable together.	
4	Place the end of the cable you want to connect under the stripped point of the cable of the vehicle...	
5	... and wrap the cable you want to connect around the cable of the vehicle.	
6	Lastly, stick insulating tape around the connection point.	

## 8 Note Cable Inscription/Color



Figure 2: Cable Inscription

**If our cable set consists exclusively of grey wires, connect the wires according to the cable inscription.**

## 9 Assembly Instructions

The following illustration shows the cable routing as well as the position of the individual components.

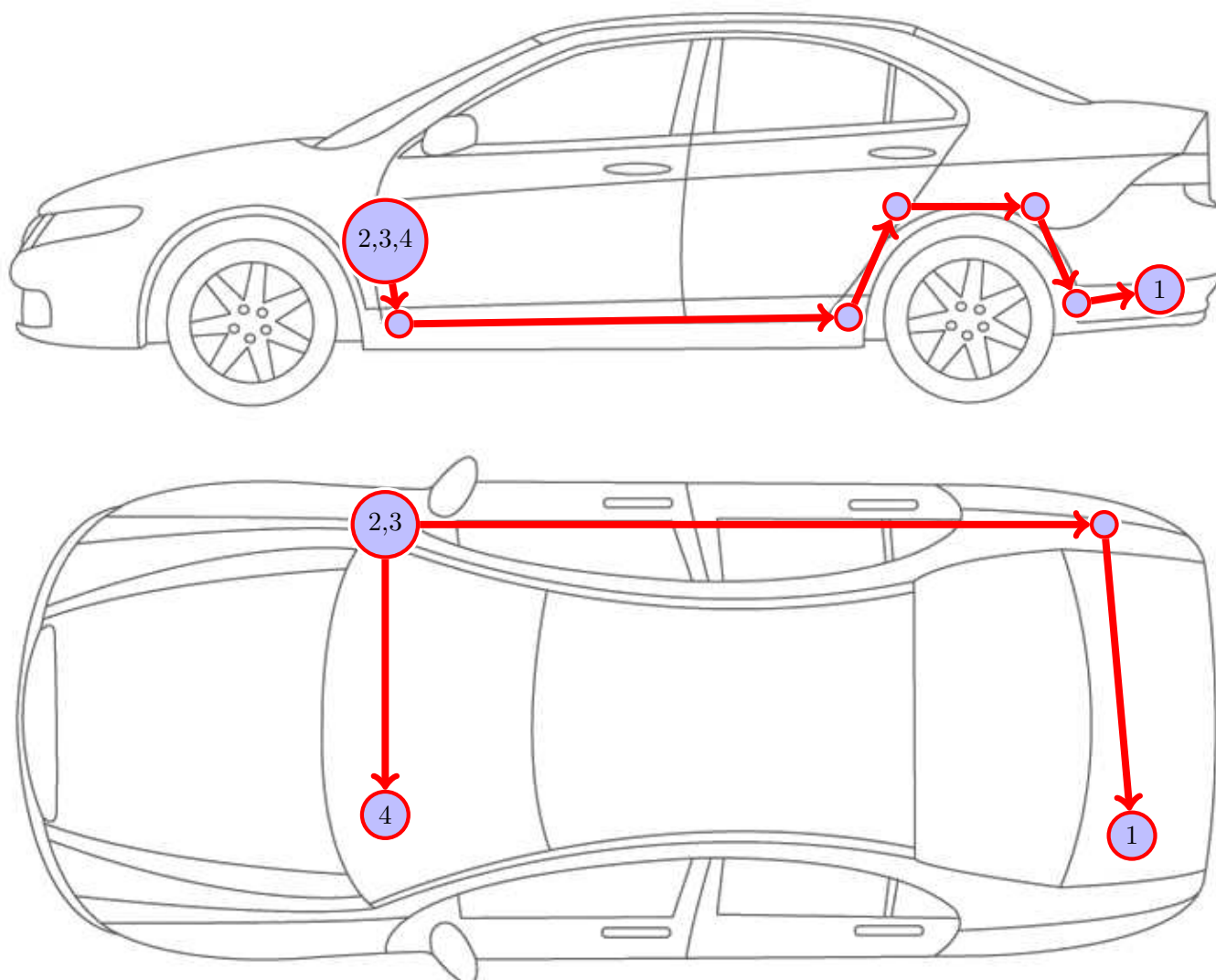


Figure 3: Vehicle overview

- 1 External sound generator incl. mounting plate
- 2 Control unit for engine sound generation
- 3 Sound Booster Pro (module)
- 4 Pushbutton



## 10 Removing front trim panel passenger's side

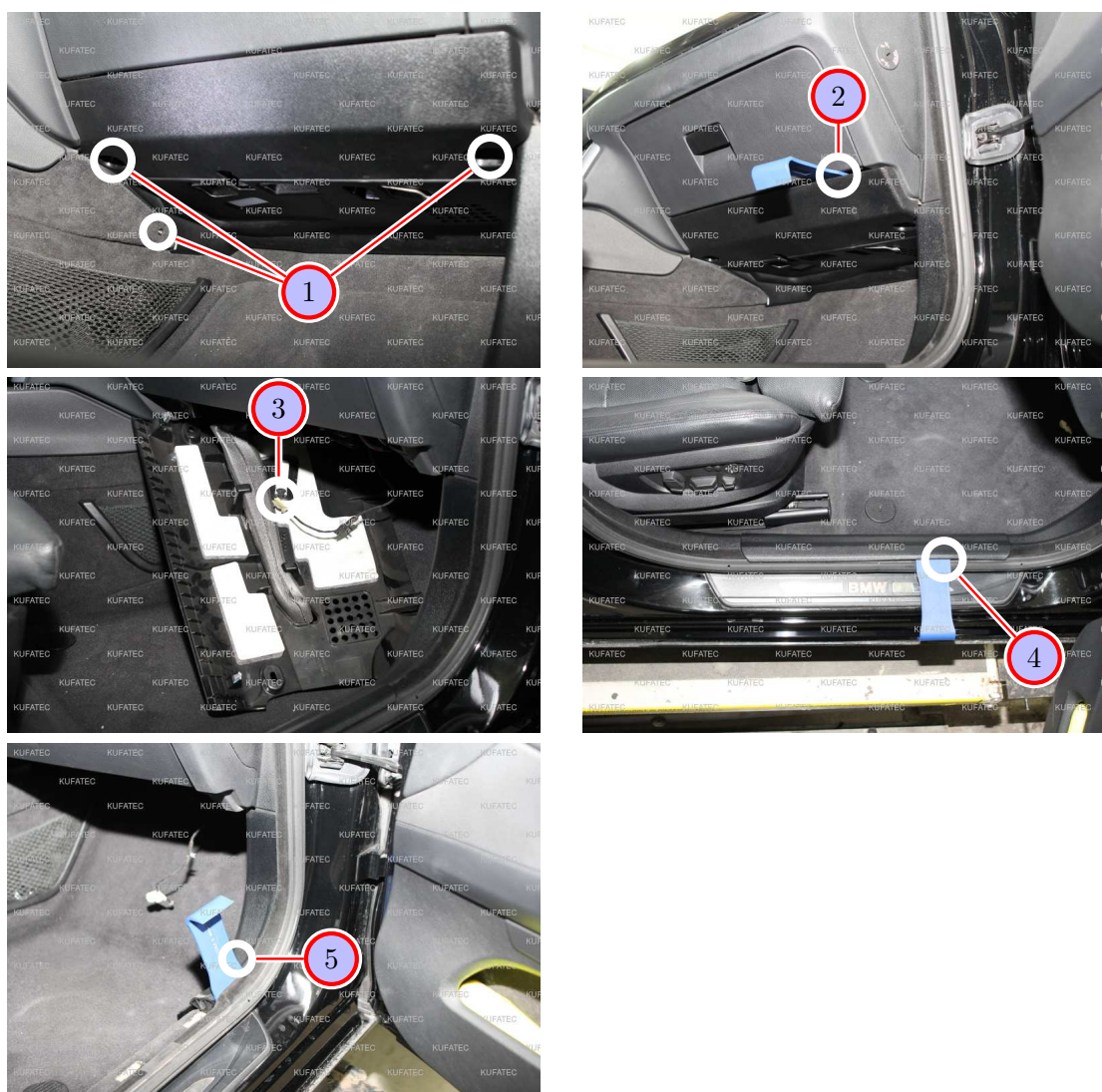


Figure 4: Removing front trim panel passenger's side

Table 2: Removing front trim panel passenger's side - instructions

Nr.	Work step	Note
1	Loosen the marked screws of the covering below the glove compartment.	3xT20
2	Loosen the covering with a trim tool and pull it down carefully.	
3	Remove the marked plug of the footwell lighting and take the covering out completely afterwards.	
4	Loosen the sill trim with a trim tool and take it out afterwards.	
5	Remove the lower trim panel of the A-pillar using a trim tool.	

## 11 Connection CAN High & Low / ignition lead

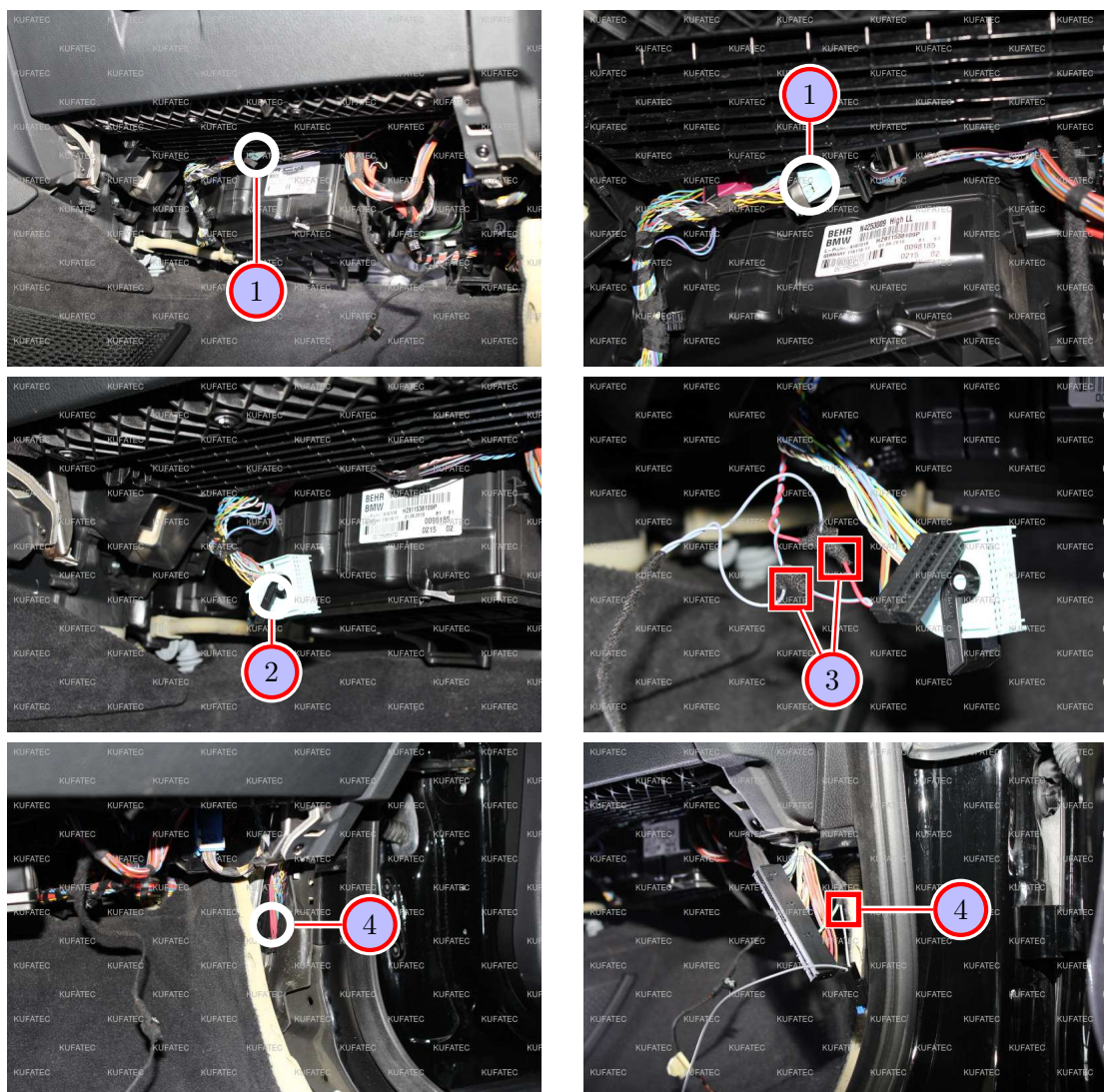


Figure 5: Connection CAN High & Low / ignition lead

Table 3: Connection CAN High & Low / ignition lead - instructions

Nr.	Work step	Note
1	Loosen the marked turquoise plug and pull it down as far as possible.	
2	Remove the plug housing.	
3	Connect CAN High & Low as follows: Solder CAN High (black/white) also on PIN 52 (colour of the cable at the vehicle = blue/red). Solder CAN Low (black/yellow) also on PIN 51 (colour of the cable at the vehicle = red). If our cable set consists exclusively of grey wires, connect according to the cable inscription at the end of the wires.	
4	Loosen the marked plug at the bottom right of the a-pillar and connect the cable for ignition lead (red/white) also to the green/blue cable (PIN 23).	



## 12 Connection ground / positioning control units

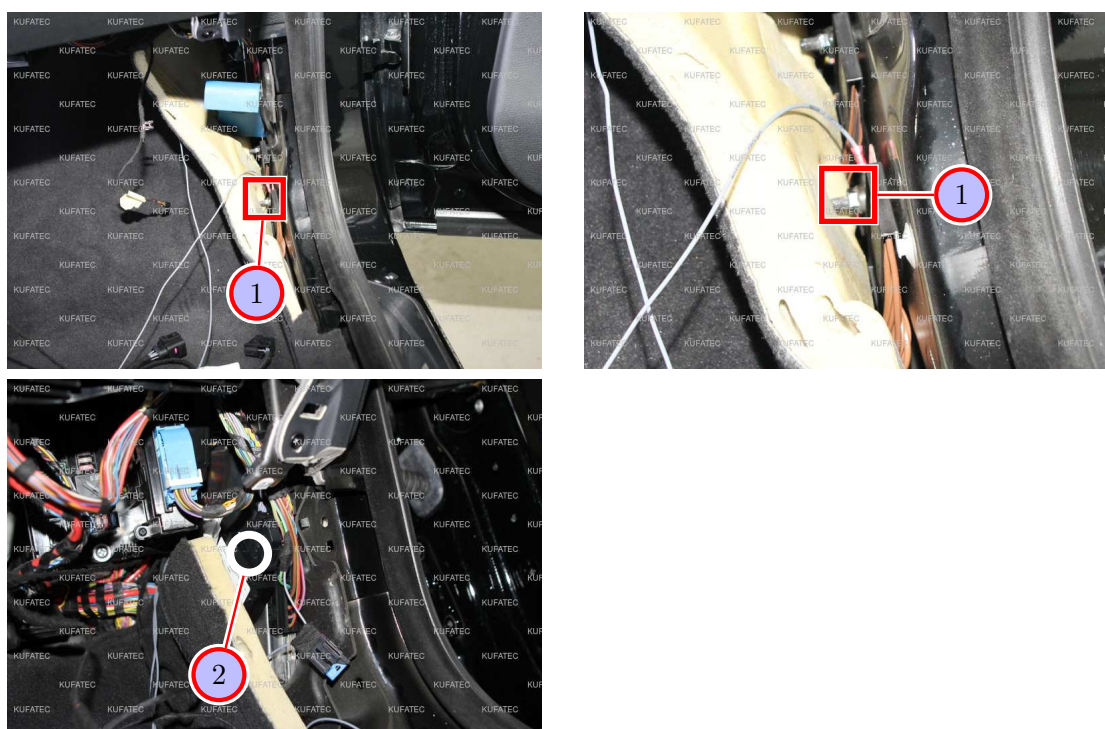


Figure 6: Connection ground / positioning control units

Table 4: Connection ground / positioning control units - instructions

Nr.	Work step	Note
1	Connect the ground cable (brown) also to the marked ground spot at the bottom at the sill trim.	1x10er socket
2	Place and attach the control unit as well as the module at the marked place behind the carpet.	

## 13 Removing rear trim panel passenger's side



Figure 7: Removing rear trim panel passenger's side

Table 5: Removing rear trim panel passenger's side - instructions

Nr.	Work step	Note
1	Loosen the rear sill trim with a trim tool and take it out afterwards.	
2	Loosen the lateral trim panel with a trim tool and pull it a bit sideward carefully.	

## 14 Removing trim panel trunk

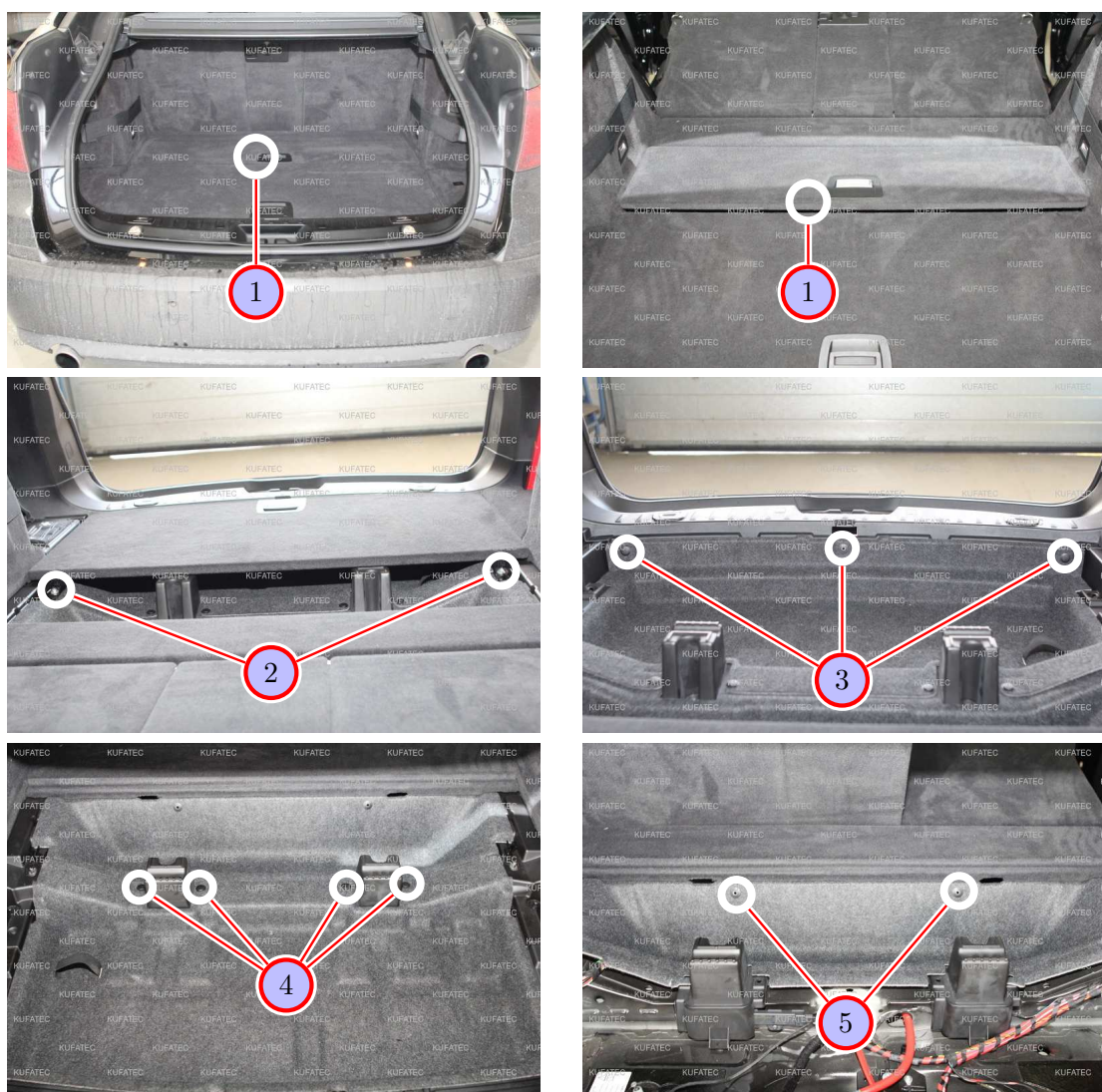


Figure 8: Removing trim panel trunk

Table 6: Removing trim panel trunk - instructions

Nr.	Work step	Note
1	Open the rear covering and pull it up and out.	
2	Loosen the two marked screws of the front covering and take it out afterwards.	2x10er socket
3	Remove the marked plastic clips of the front carpet covering using a trim tool.	
4	Loosen the marked plastic clips and take the front carpet covering out afterwards.	
5	Remove the rear carpet covering by loosening the marked plastic clips.	



## 15 Cable routing to the sound generator

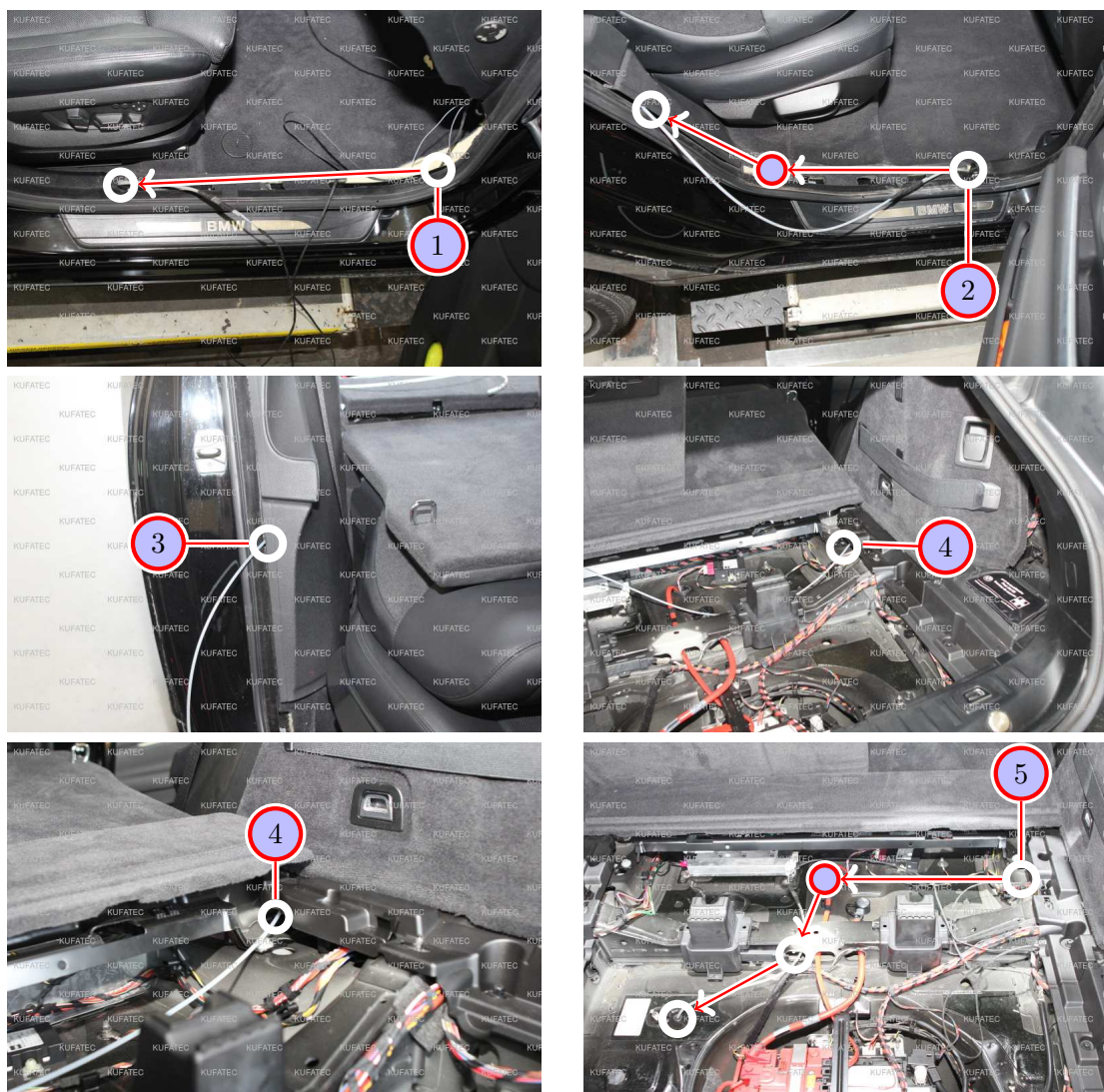


Figure 9: Cable routing to the sound generator

Table 7: Cable routing to the sound generator - instructions

Nr.	Work step	Note
1	Route the connecting cable for the sound generator along the sill trim to the trim panel of the b-pillar and guide it behind the trim panel backward.	
2	Pull the connecting cable out from behind the trim panel of the b-pillar and route it along the rear sill trim up to the side trim panel.	
3	Guide the connecting cable behind the side trim panel in the trunk.	
4	Pull the connecting cable out from under the trim panel.	
5	Route the connecting cable along the marking to the grommet.	

## 16 Installation / Connection sound generator

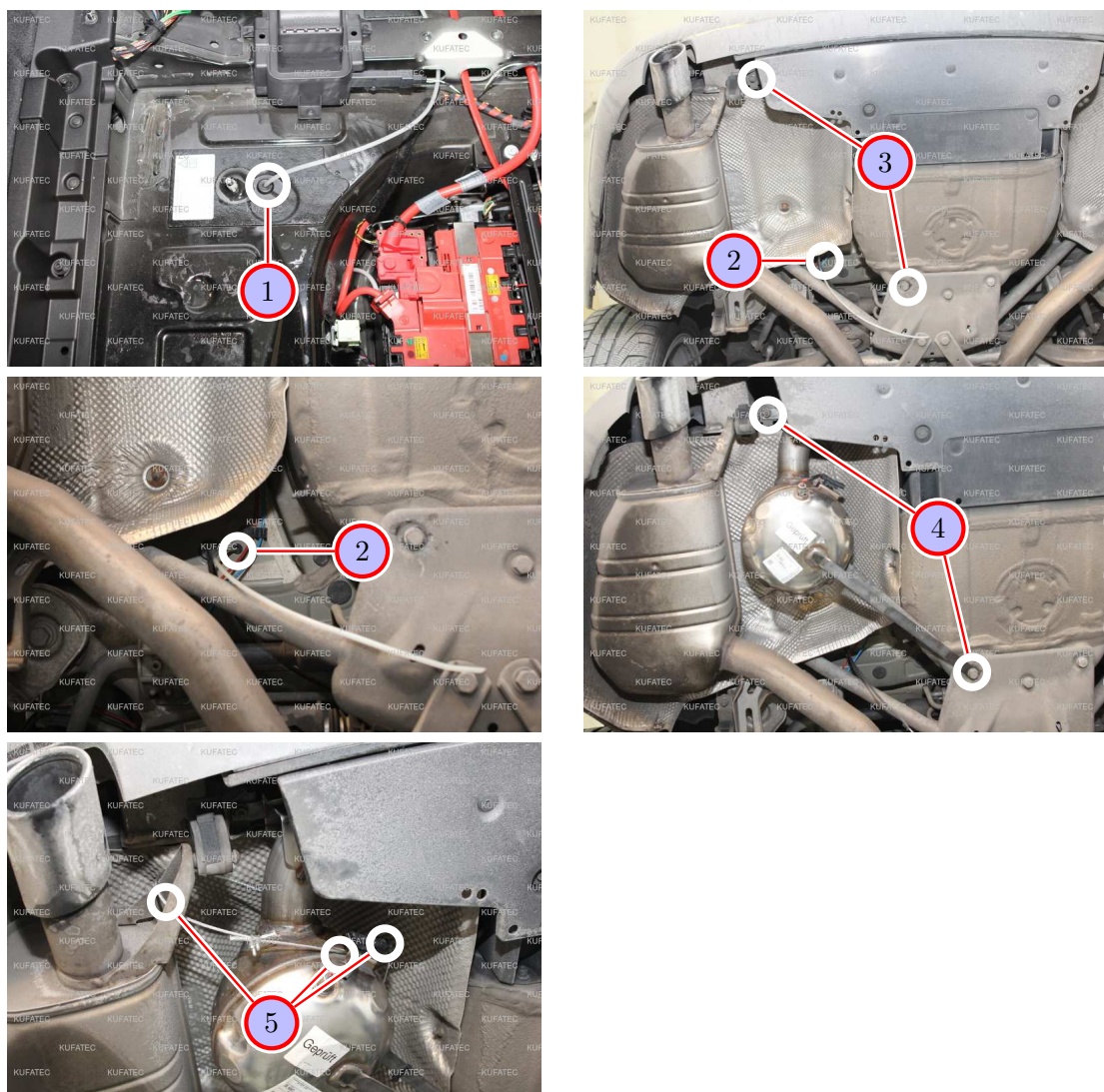


Figure 10: Installation / Connection sound generator

Table 8: Installation / Connection sound generator - instructions

Nr.	Work step	Note
1	Guide the connecting cable for the sound generator through the grommet to the underbody.	
2	Pull the connecting cable through the grommet. Waterproof the grommet afterwards.	
3	Loosen the two marked screws of the support as well as of the exhaust bracket.	1x13er, 1x16er socket
4	Mount the sound generator with the just loosened screws at the vehicle.	1x13er, 1x16er socket
5	Connect the connecting cable to the sound generator and attach the delivered steel wire rope to the sound generator as well as to the marked position at the exhaust.	



## 17 Removing lower trim panel of the dashboard

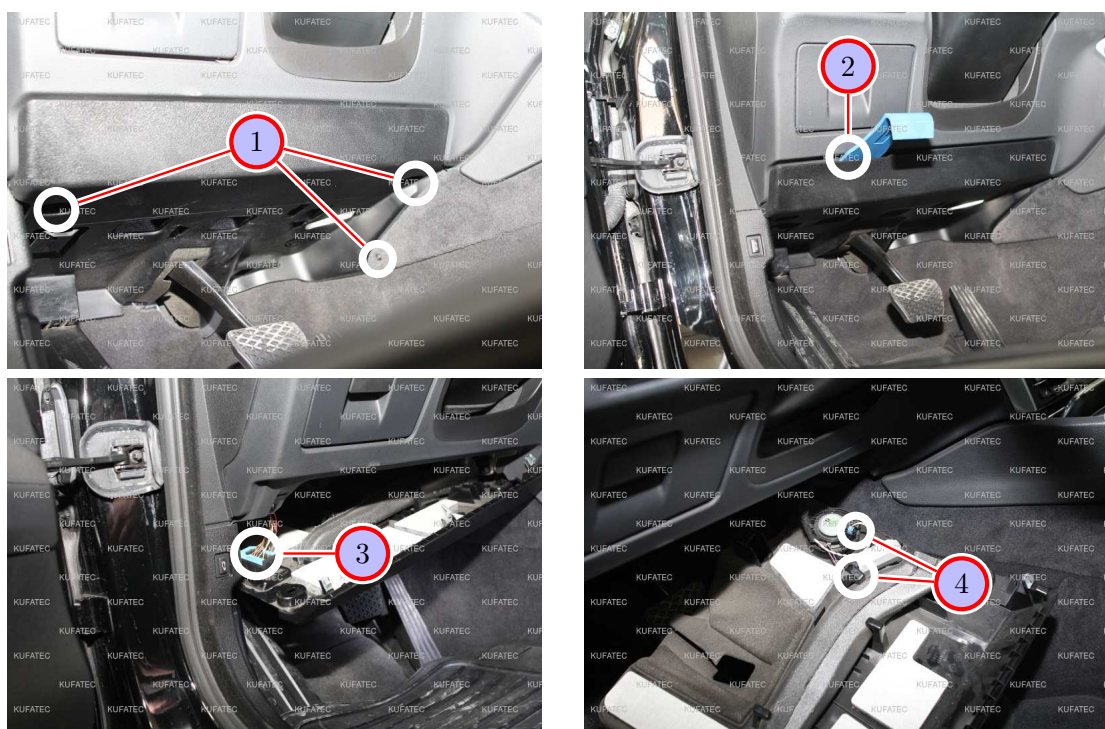


Figure 11: Removing lower trim panel of the dashboard

Table 9: Removing lower trim panel of the dashboard - instructions

Nr.	Work step	Note
1	Loosen the marked screws of the lower trim panel of the dashboard.	3xT20
2	Loosen the lower trim panel with a trim tool and pull it down carefully.	
3	Loosen the blue interlock of the OBD power outlet and press it out from the bottom up.	
4	Remove the two plugs and take the trim panel out completely.	



## 18 Installation pushbutton

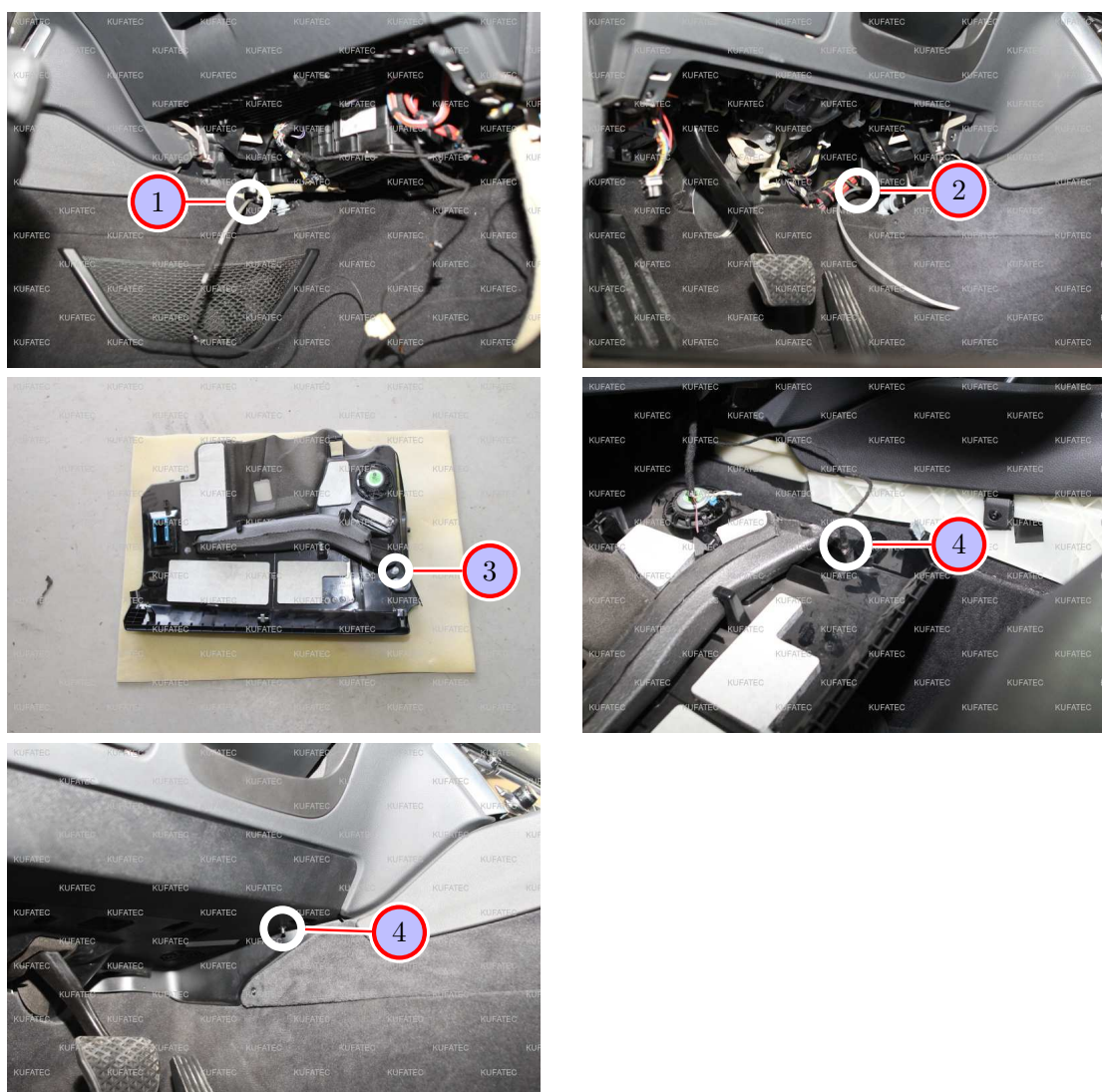


Figure 12: Installation pushbutton

Table 10: Installation pushbutton - instructions

Nr.	Work step	Note
1	Guide the cable of the pushbutton behind the center console to the driver's side using a pull through aid.	
2	Pull the cable of the pushbutton out from behind the center console.	
3	Drill a suitable hole for the pushbutton at the marked position of the lower trim panel of the dashboard.	7mm
4	Mount the pushbutton at the marked position.	

## 19 Important Information Sound Booster

Please use for the fixation of the Sound Booster suitable high tensile screws. In order to avoid loosening of the screws by vibration please make the screws safe with appropriate factory material e.g. Threadlock. Please additionally check the stability of the Sound Booster regularly and if necessary retighten the screws. In case of no consideration we do not assume liability for possible damages. After successful installation we recommend to cover the sound generator with a zinc spray. Make sure that you cover the opening of the sound generator so that no zinc spray can't get inside the sound generator.

As additional safety the delivered steel cable and the retaining clips have to be tightened on the Sound Booster as well as at a suitable position in the car. This safety cable is an additional security should the tightening screws should be released by vibration.

## List of Figures

1	How to connect a cable to another . . . . .	6
2	Cable Inscription . . . . .	7
3	Vehicle overview . . . . .	8
4	Removing front trim panel passenger's side . . . . .	9
5	Connection CAN High & Low / ignition lead . . . . .	10
6	Connection ground / positioning control units . . . . .	11
7	Removing rear trim panel passenger's side . . . . .	12
8	Removing trim panel trunk . . . . .	13
9	Cable routing to the sound generator . . . . .	14
10	Installation / Connection sound generator . . . . .	15
11	Removing lower trim panel of the dashboard . . . . .	16
12	Installation pushbutton . . . . .	17

## List of Tables

1	How to connect a cable to another . . . . .	6
2	Removing front trim panel passenger's side - instructions . . . . .	9
3	Connection CAN High & Low / ignition lead - instructions . . . . .	10
4	Connection ground / positioning control units - instructions . . . . .	11
5	Removing rear trim panel passenger's side - instructions . . . . .	12
6	Removing trim panel trunk - instructions . . . . .	13
7	Cable routing to the sound generator - instructions . . . . .	14
8	Installation / Connection sound generator - instructions . . . . .	15
9	Removing lower trim panel of the dashboard - instructions . . . . .	16
10	Installation pushbutton - instructions . . . . .	17